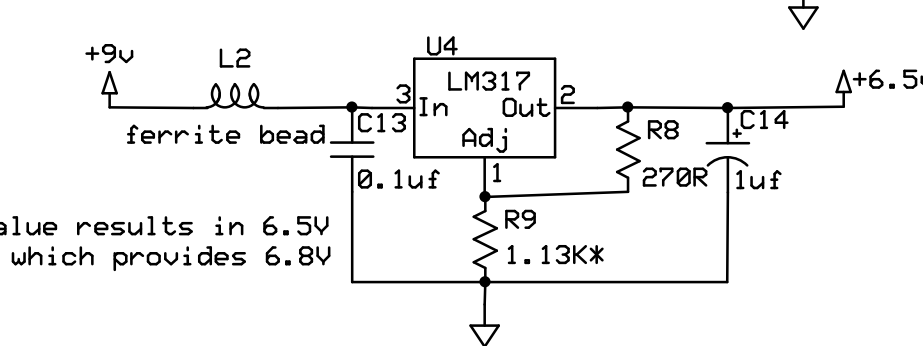
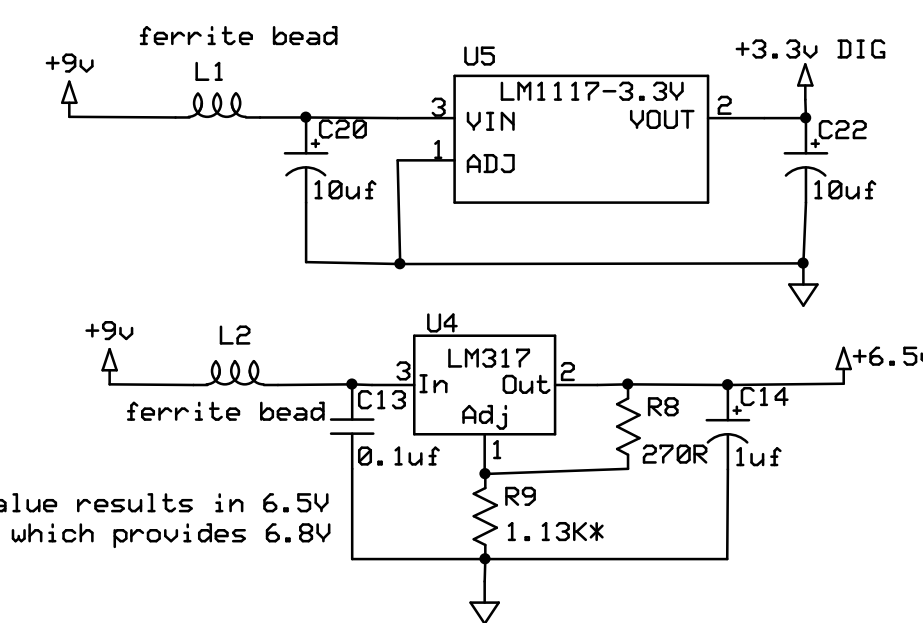
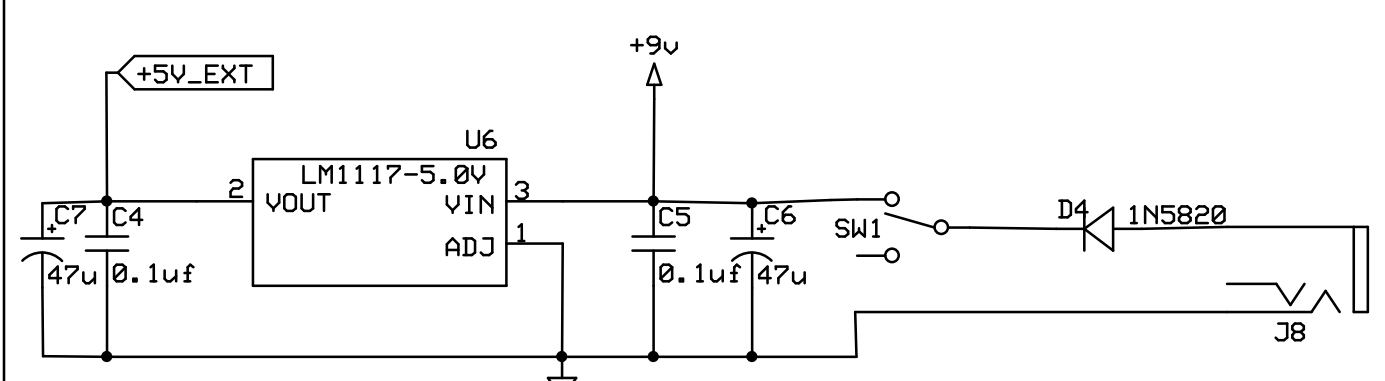
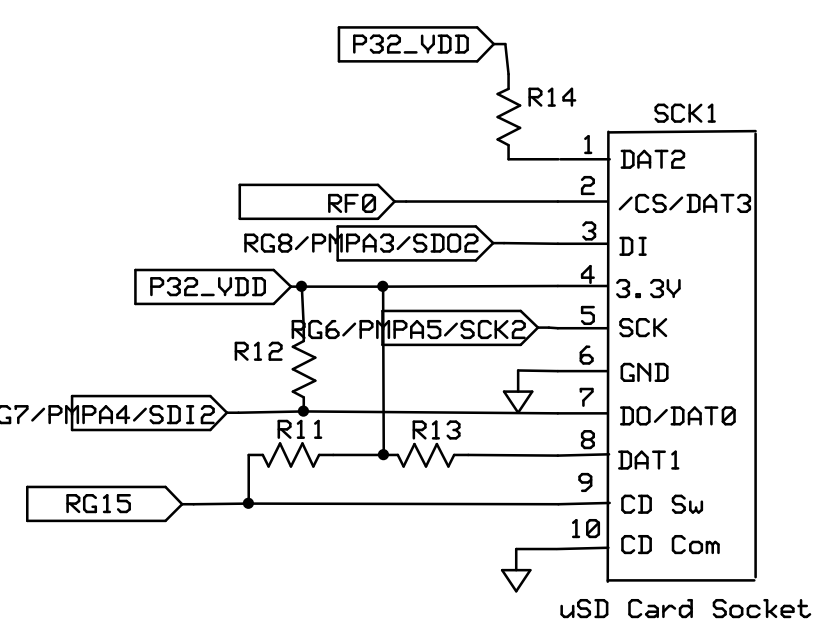
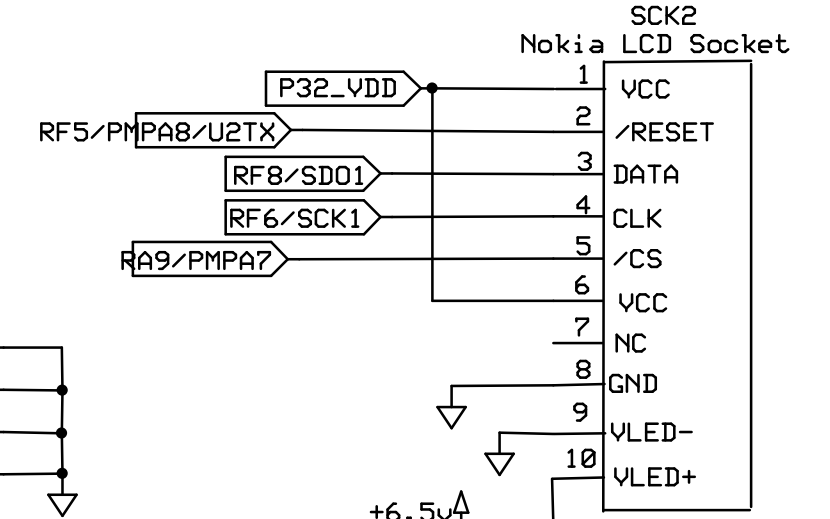
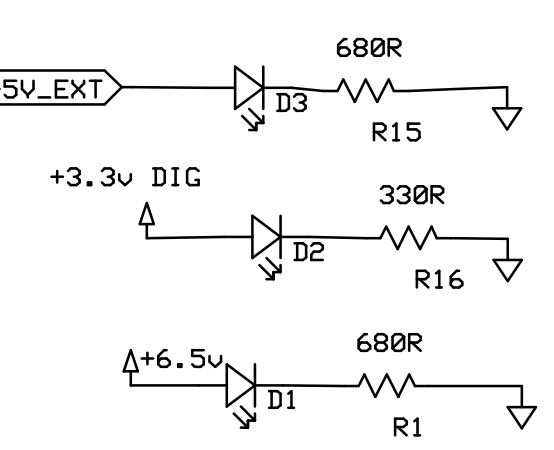
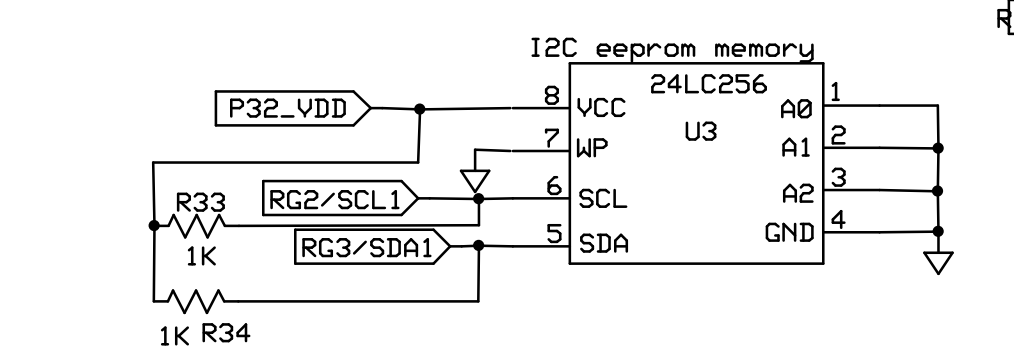
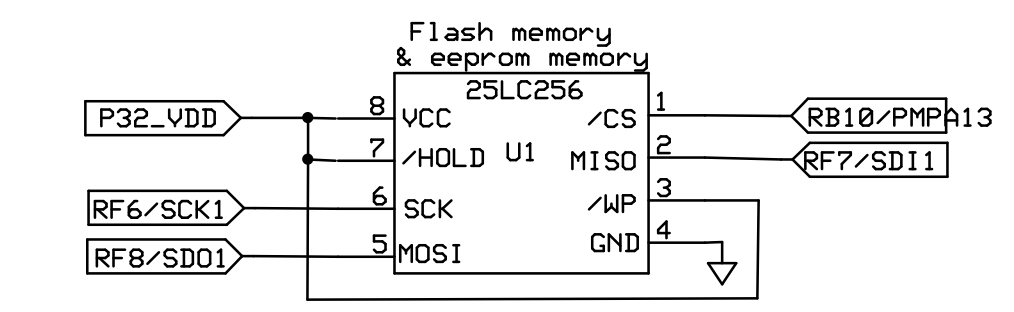
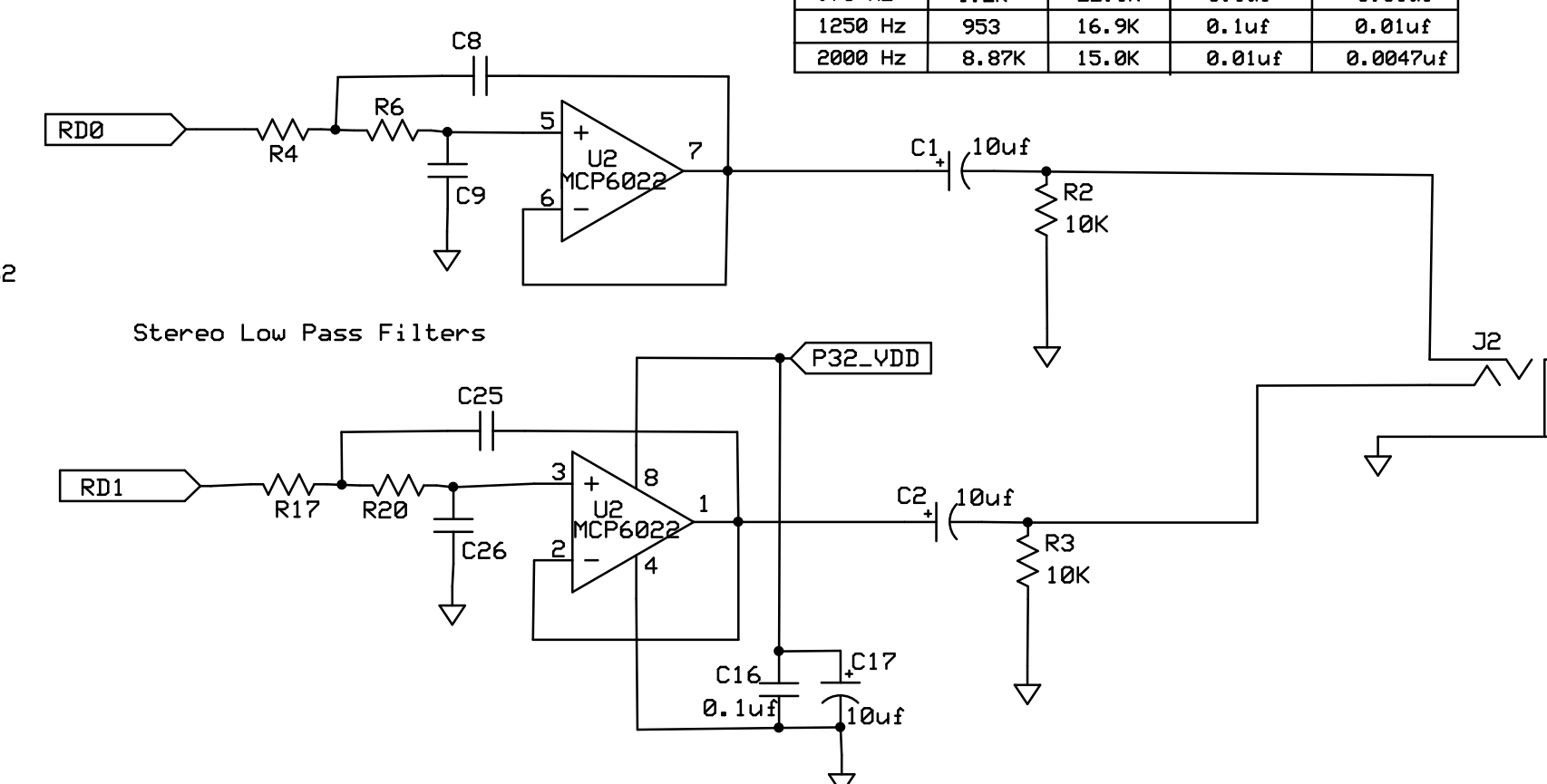


Sample values for 2nd order Low Pass Filter

Frequency	R4,R17	R6,R20	C8,C25	C9,C26
850 Hz	1.4K	24.9K	0.1uf	0.01uf
970 Hz	1.2K	22.1K	0.1uf	0.01uf
1250 Hz	953	16.9K	0.1uf	0.01uf
2000 Hz	8.87K	15.0K	0.01uf	0.0047uf



* NOTE: R9 = 1.13K value results in 6.5V
1.2K can be used instead which provides 6.8V

Version	Rev	Date	By	Comment
1.0	NC		eo	Initial version
1.3	NC	5/6/08	eo	Updated, added VGA & PS2
1.4	NC	5/12/08	eo	Fixed RTS & CTS pins
1.4	A	6/4/08	eo	Updated Cap & Res values
1.4	B	7/3/08	eo	Changed aux 3.3v to LM1117
1.4	C	9/24/08	eo	Updated for DM32003 USB unit moved switches to RC1&2, added notes for VGA interface
1.5	NC	4/18/09	eo	Updated video/VGA interface & USB version mods + 320x240LCD

Copyright © Eflightworks 2009
All rights reserved

Eflightworks
Eden, NY 14057

PIC32MX Starter board Breakout Board

E. Ohmit	Ver 1.5 4/18/2009	Page 1 of 2
----------	----------------------	-------------

